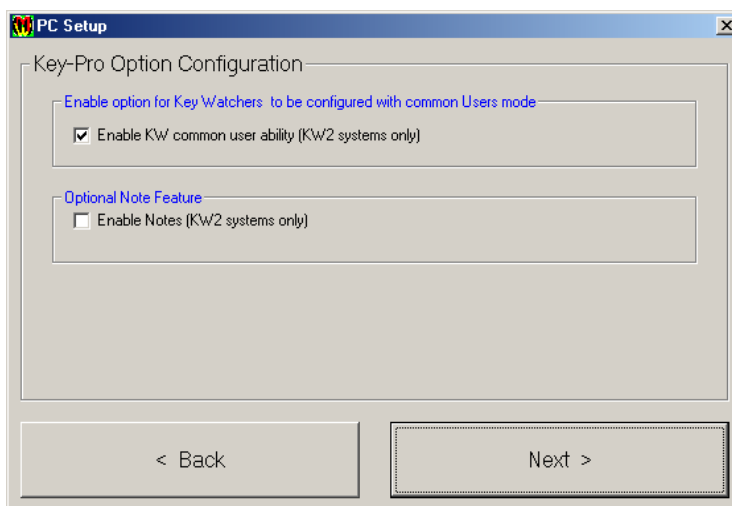


A new version for the KEY-PRO software for Windows has been released. The new version implements many new features so be sure to read this addendum carefully. The following items detail the changes to the operation of the software. Please keep this information with your KEY-PRO Users Manual for reference.

- 1) **Configure PC.** The following window will now appear during the **PC Setup**. The items in the window are described below:



Enable option for KeyWatchers to be configured with common User mode: Allows the user to specify whether or not the software will maintain the same users in multiple KeyWatcher systems. This item is only available for KeyWatcher II systems. This will be described in more detail throughout this addendum.

Optional Note Feature: Allows the user to specify whether or not the software will use the Notes feature when keys are removed and returned using the KEY-PRO software. This feature is described in the KEY-PRO User manual. If notes are enabled, the user may also choose to make the Notes feature Mandatory in order to remove and return keys using the software. This added feature requires the user to complete all note fields in order to remove or return keys.

- 2) **Quick Key.** This feature has been added to the Main Window and contains the Quick Key Mode. This is described below:

Quick Key Mode: Allows the user to access the Remove Key / Return Key feature for the selected KeyWatcher. This is useful in cases where the computer is used for removing and returning keys on a regular basis. When selected the following will be displayed:

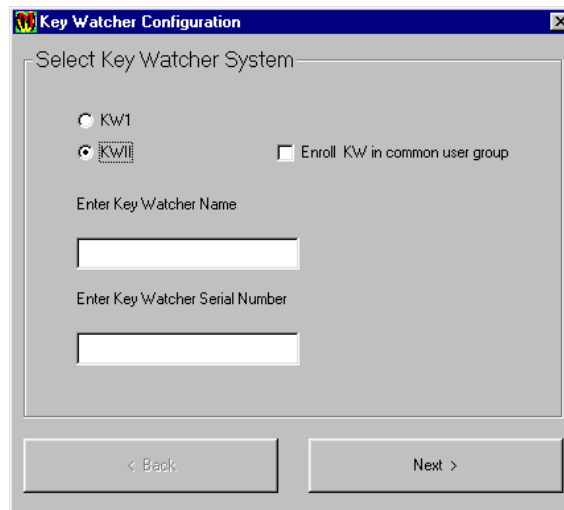


When the Key-Pro Quick Key window is open with password enabled, the user will need to Login when the window is closed.

- 3) **Biometrics.** This feature is located under the **Edit** menu and only pertains to users with a Bioscrypt reader. All other users can disregard this section. Users with a Bioscrypt reader will be supplied with a separate addendum explaining this feature.

- 4) **Common User Database.** Please keep in mind that this feature allows the user to maintain the same users throughout all common user KeyWatcher systems. This item is only available for KeyWatcher II systems. The following describes items related to this feature:

To enable this function the user must first globally make this option available during the Config PC by selecting Enable KW common user ability. Secondly, each KeyWatcher that is to be configured as common user must be enrolled at the following window by selecting the Enroll KW in common user group. This can only be selected when adding a new KeyWatcher and may not be changed once the KeyWatcher has been added. If you would like to change this feature later, the KeyWatcher will need to be deleted and then added again.

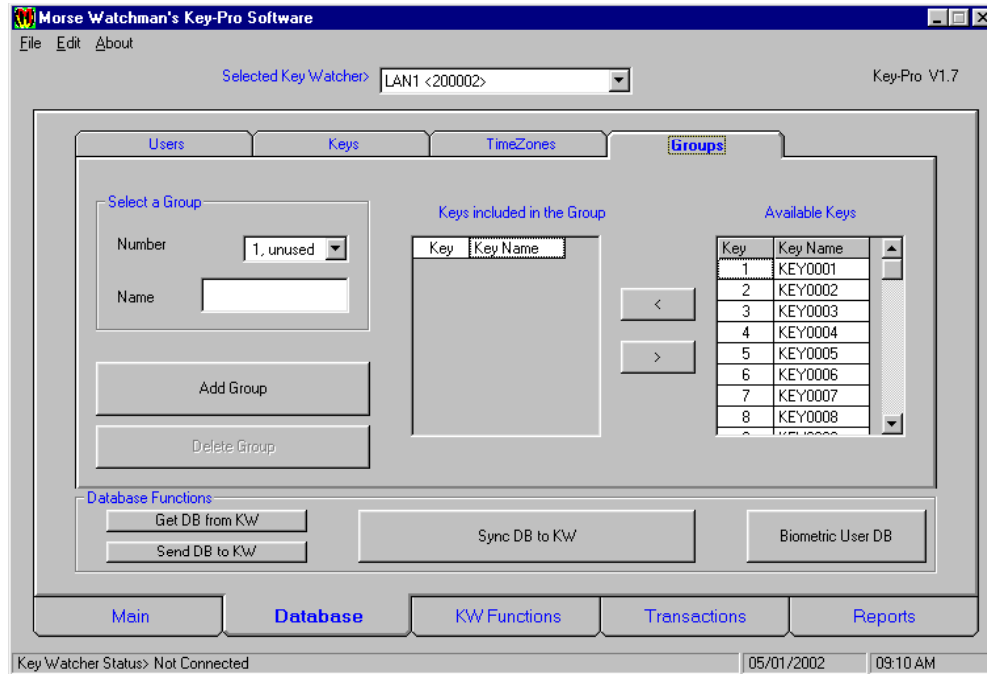


Anytime the user database has been modified the programmer should select Sync DB to KW. This will update all the KeyWatcher's currently designated as Common User KeyWatcher's. If any errors or problems occur during the Sync process, the programmer will be notified by a pop-up dialog box. Be aware that performing the Send DB to KW runs the risk of all KeyWatcher's not containing the same users.

Important notes when using the Common User Database feature.

- ◆ The KeyWatcher II version **MUST** be 7.4 or above for through hole systems and 8.4 or above for SMD systems. These versions remove all the edit user capabilities from the KeyWatcher when the system is being used with the Common User feature. This insures that all the users will be the same throughout all the Common User KeyWatcher's.
- ◆ The Keys, User Restrictions, Time Zones, and Groups are individual to each system.
- ◆ Once the first Common User KeyWatcher has been created, all users from that KeyWatcher will automatically be added to each new KeyWatcher that is added as a Common User KeyWatcher.
- ◆ One Time User Codes are not available for Common User KeyWatcher's.
- ◆ This feature should only be enabled for KeyWatcher's that will contain **ALL** the same users.
- ◆ The Backup and Restore features should be avoided for Common User KeyWatcher's. This feature may lead to systems with different users.

5) **Groups.** The Groups Window has been modified slightly. The following shows an example of the new window:



This window allows the user to Add, Modify, and Delete Groups. The following describes each of these items.

Add Group

- 1) Enter a Name for the Group.
- 2) Select the Group number that you want to Add at the Database / Groups window.
- 3) Select each key to be added to the Group from the **Available Keys** list and then move them to the **Keys included in the Group** list using the arrow available.
- 4) Select **Add Group**.

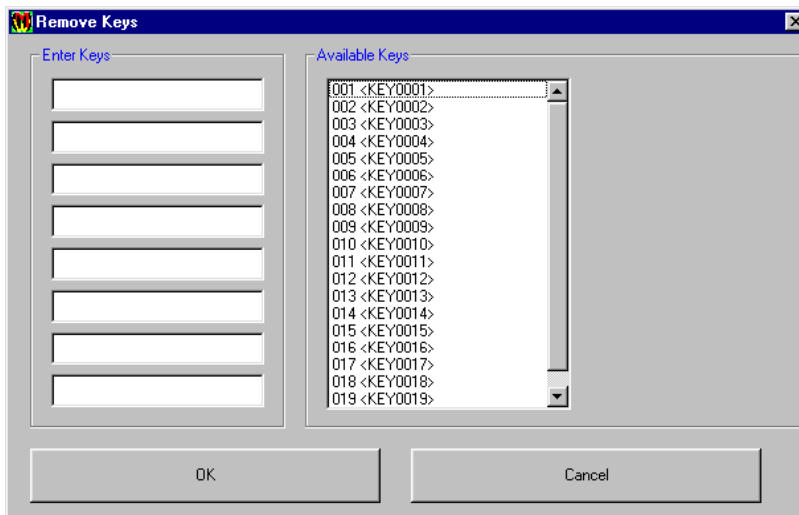
Add Group

- 1) Select the Group number that you want to Modify at the Database / Groups window.
- 2) Select each key to be added or removed from the Group and move them using the arrows available.
- 3) Select **Update Group**.

Delete Group

- 1) Select the Group number that you want to Delete at the Database / Groups window.
- 2) Select **Delete Group**.

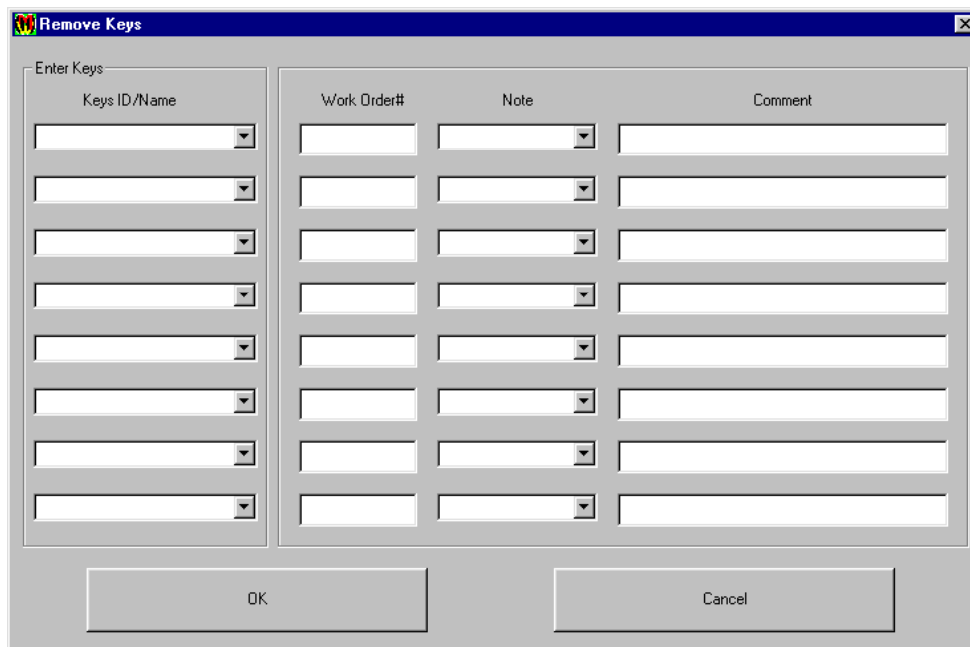
- 6) **Remove Keys:** The Remove Keys Window has been modified slightly. The following shows an example of the new window:



This window allows the user to Remove Keys. The following describes this item.

- 1) Select key to be removed from the Available Keys list and the key will be added to the Enter Keys section. When all the keys to be removed have been selected, select **OK**. The remove keys process will then operate as described in the Key-Pro User Manual.

For users with the Notes feature enabled:



- 1) Keys and Notes are now selected using the pull-down arrows. All other items operate as described in the Key-Pro User manual.

Return Keys: This works the same for the return keys with the Notes feature enabled.